

## DELAWARES

Delawares were first developed in 1940 from off-colored sports which occurred in the cross between Barred Plymouth Rock males and New Hampshire females. They are named for the state in which they originated. These sports lacked the black extension factor that would normally have been transmitted from the Barred Plymouth Rock male with the result they came almost white, showing a slight indication of barring in the hackle, primaries, secondaries and tail. Admitted to the Standard in 1952.

### ECONOMIC QUALITIES:

A dual purpose fowl with well developed egg and meat characteristics. Excellent as broilers with an abundance of vigor and fine market quality. Delaware males may be mated to New Hampshire or Rhode Island Red females and produce chicks of the Delaware feather pattern. Delaware females may be mated to New Hampshire or Rhode Island Red males, and sex-linked chicks result; the males have the Delaware pattern and the females have solid red feather pattern of the male. These day-old chicks may be separated according to sexes by their color.

### *Disqualifications*

See General Disqualifications and Cutting for Defects.

### STANDARD WEIGHTS

Cock .....	8½ lbs.	Hen .....	6½ lbs.
Cockerel .....	7½ lbs.	Pullet .....	5½ lbs.

### SHAPE—MALE

**COMB:** Single, moderately large, well developed, set firmly on head, perfectly straight and having five well defined points, those in front and rear smaller than those in center; blade smooth, inclining slightly downward, but not following contour of neck too closely.

**BEAK:** Strong, medium in length, regularly curved.

**FACE:** Surface smooth, full in front of eyes, skin fine and soft in texture.

**EYES:** Large, round, prominent.

**WATTLES:** Moderately large, uniform, free from folds or wrinkles.

**EAR-LOBES:** Elongated oval, smooth, fitting close to head.

**HEAD:** Medium in length, moderately deep, inclined to be flat on top.

**NECK:** Medium length, well arched.

**HACKLE**—well developed, flowing over shoulders, moderately close feathered.

**BACK:** Moderately long, nearly horizontal, broad its entire length, forming a gradual concave sweep from saddle to tail.

**TAIL:** Medium length, well spread, carried at an angle of forty degrees (40°) above horizontal.

**MAIN TAIL**—broad and overlapping.

**MAIN SICKLES**—medium length, extending beyond main tail.

**LESSER SICKLES AND COVERTS**—medium length, broad.

**WINGS:** Moderately large, well folded, carried close to body, lower line of folded wing carried horizontally.

**PRIMARIES AND SECONDARIES**—broad and overlapping in natural order when wing is folded.

**BREAST:** Deep, full, broad and well rounded.

**BODY AND FLUFF:** **BODY**—moderately long, broad, deep; keel long, extending well to front at breast and to rear of legs.

**FLUFF**—medium in length, moderately full.

**LEGS AND TOES:** Legs set well apart, straight when viewed from front.

**LOWER THIGHS**—large and muscular, well feathered.

**SHANKS**—medium length, smooth.

**TOES**—four on each foot, medium length, straight, well spread.

### SHAPE—FEMALE

**COMB:** Single, moderately large, well developed, smooth in texture, firm at base, having five well defined points, those in front and rear smaller than those in center; straight and upright in front, may be straight or inclined to lop at rear.

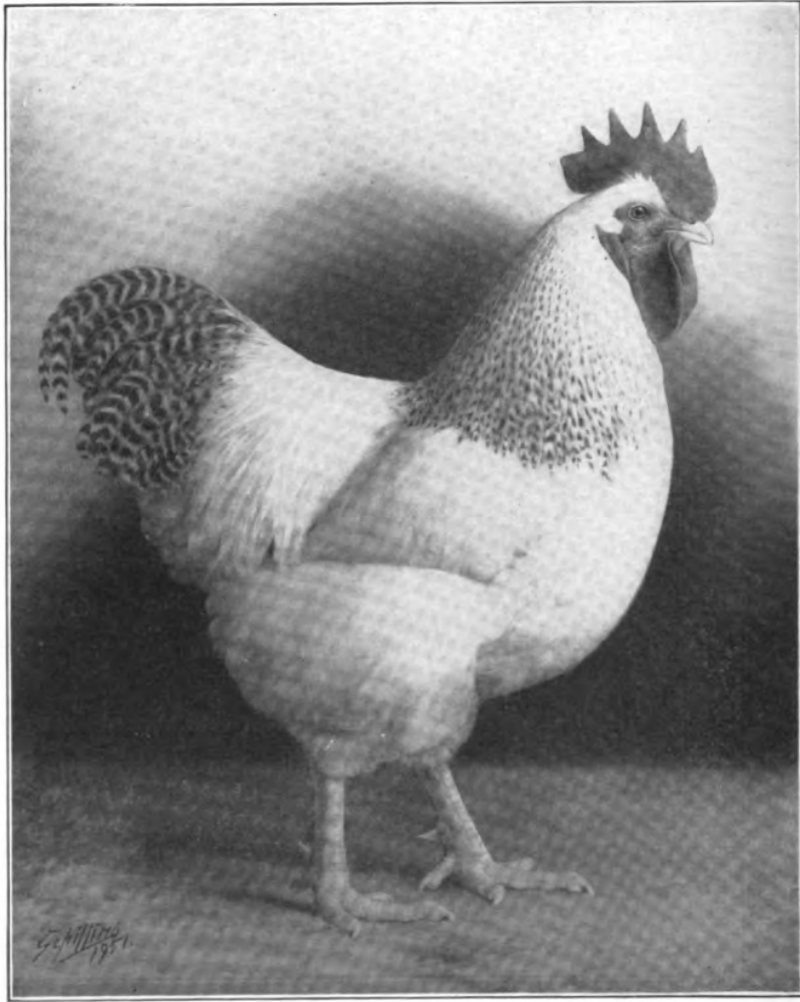


FIGURE 97  
DELAWARE MALE

178

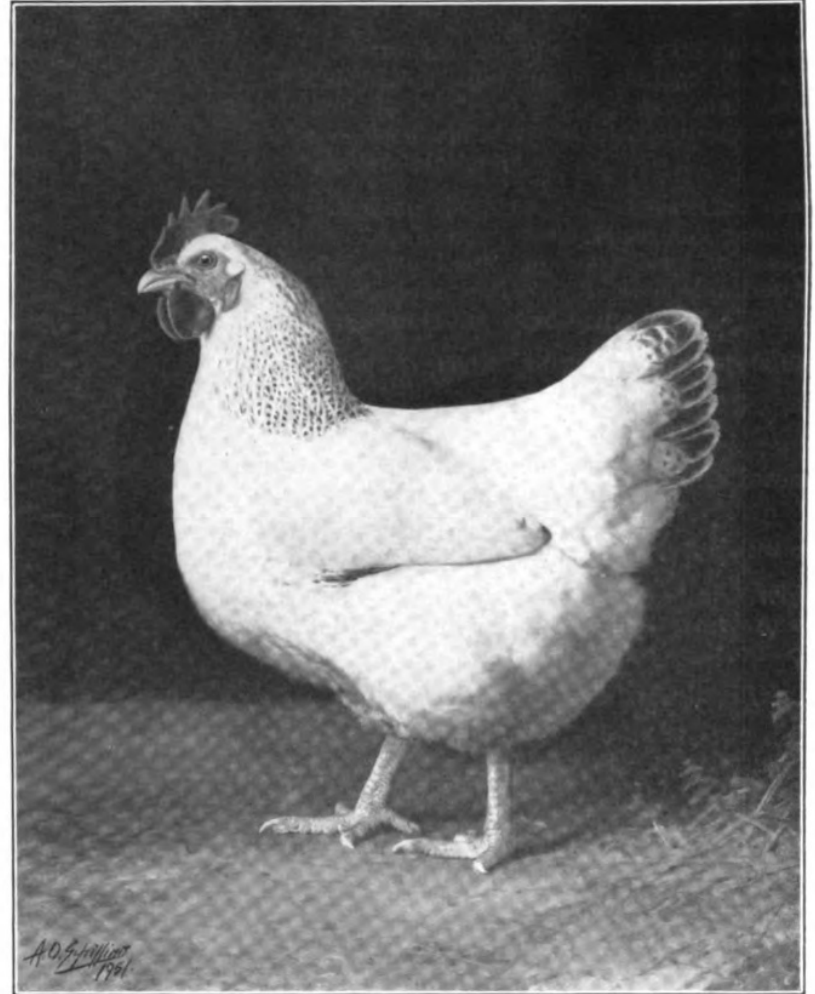


FIGURE 98  
DELAWARE FEMALE

179

**BEAK:** Medium length, regularly curved.  
**FACE:** Surface smooth, full in front of eyes, skin fine and soft in texture.  
**EYES:** Large, round, prominent.  
**WATTLES:** Medium size, well developed, well rounded.  
**EAR-LOBES:** Elongated oval, smooth, fitting close to head.  
**HEAD:** Medium length, moderately deep, inclined to be flat on top.  
**NECK:** Of medium length, slightly arched, moderately close feathered.  
**BACK:** Moderately long, nearly horizontal, broad its entire length, forming a gradual concave sweep from rear of back to tail.  
**TAIL:** Medium length, moderately well spread, carried at angle of thirty degrees (30°) above the horizontal. Main tail feathers broad and overlapping.  
**WINGS:** Moderately large, well folded, carried close to body, lower line of folded wing carried horizontally.  
**PRIMARIES AND SECONDARIES**—broad and overlapping in natural order when wing is folded.  
**BREAST:** Deep, full, well rounded.  
**BODY AND FLUFF:** **BODY**—moderately long, broad, deep, well rounded, keel long, extending well to front at breast and to rear of legs.  
**FLUFF**—medium in length, moderately full.  
**LEGS AND TOES:** Legs set well apart, straight when viewed from front.  
**LOWER THIGHS**—medium length, well feathered, stout.  
**SHANKS**—medium length, smooth.  
**TOES**—four on each foot, medium length, straight, well spread.

**COLOR—MALE**

**COMB, FACE, WATTLES AND EAR-LOBES:** Bright red.  
**BEAK:** Reddish horn.  
**EYES:** Reddish bay.  
**HEAD:** Plumage, white.

**NECK:** **HACKLE**—web of feather white, crossed with irregular indications of black barring; quill and shaft, white.  
**FRONT OF NECK**—white.  
**BACK AND SADDLE:** White.  
**TAIL:** **MAIN TAIL**—showing irregular indication of black and white barring, black predominating.  
**SICKLES AND COVERTS**—showing irregular indistinct black and white barring; quills and shafts, white.  
**WINGS:** **FRONTS, BOWS AND COVERTS**—white.  
**PRIMARIES AND SECONDARIES**—showing irregular indication of black and white barring, the black predominating; quill and shaft, white.  
**BREAST:** White.  
**BODY AND FLUFF:** White.  
**LEGS AND TOES:** **LOWER THIGHS**—white.  
**SHANKS AND TOES**—rich yellow.  
**UNDERCOLOR OF ALL SECTIONS:** White.

**COLOR—FEMALE**

**COMB, FACE, WATTLES AND EAR-LOBES:** Bright red.  
**BEAK:** Reddish horn.  
**EYES:** Reddish bay.  
**HEAD:** Plumage, white.  
**NECK:** **HACKLE**—showing irregular indications of black and white barring; entire web edged with white; quill and shaft, white.  
**FRONT OF NECK**—white.  
**BACK:** White.  
**TAIL:** **MAIN TAIL**—black, entire feather edged with white.  
**COVERTS**—showing indications of irregular black and white barring, predominatingly white; quill and shaft, white.  
**WINGS:** **FRONTS, BOWS AND COVERTS**—white.  
**PRIMARIES AND SECONDARIES**—showing slight indication of irregular black and white barring, the white predominating; quill and shaft, white.  
**BREAST:** White.  
**BODY AND FLUFF:** White.  
**LEGS AND TOES:** **LOWER THIGHS**—white.  
**SHANKS AND TOES**—rich yellow.